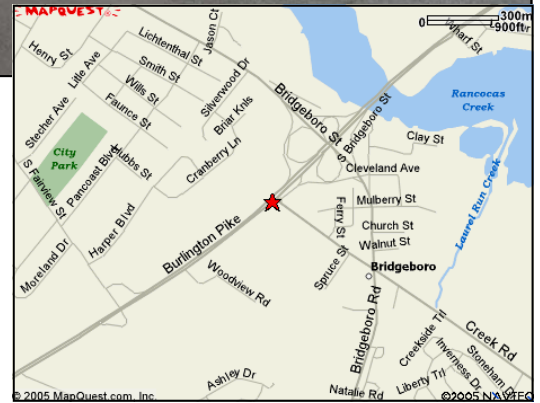




# Commercial Property



## DELRAN PROFESSIONAL CENTER 8008 US ROUTE 130 DELRAN, NJ

Medical and professional offices available within Buildings One and Two of this three building office complex.

### **BUILDING ONE**

General office space only

Suite 125 ~ 2,400 SF (divisible into two smaller suites  
1,300 SF and 1,100 SF)

Suite 208 ~ 1,150 SF

Suite 212 ~ 625 SF

### **BUILDING TWO**

Existing medical suite; immediate occupancy

Suite 310 ~ 3,100 SF (floor plan on reverse)



1060 N. Kings Highway  
Suite 250  
Cherry Hill, NJ 08034  
Phone: 856-482-5959  
Fax: 856-482-6215

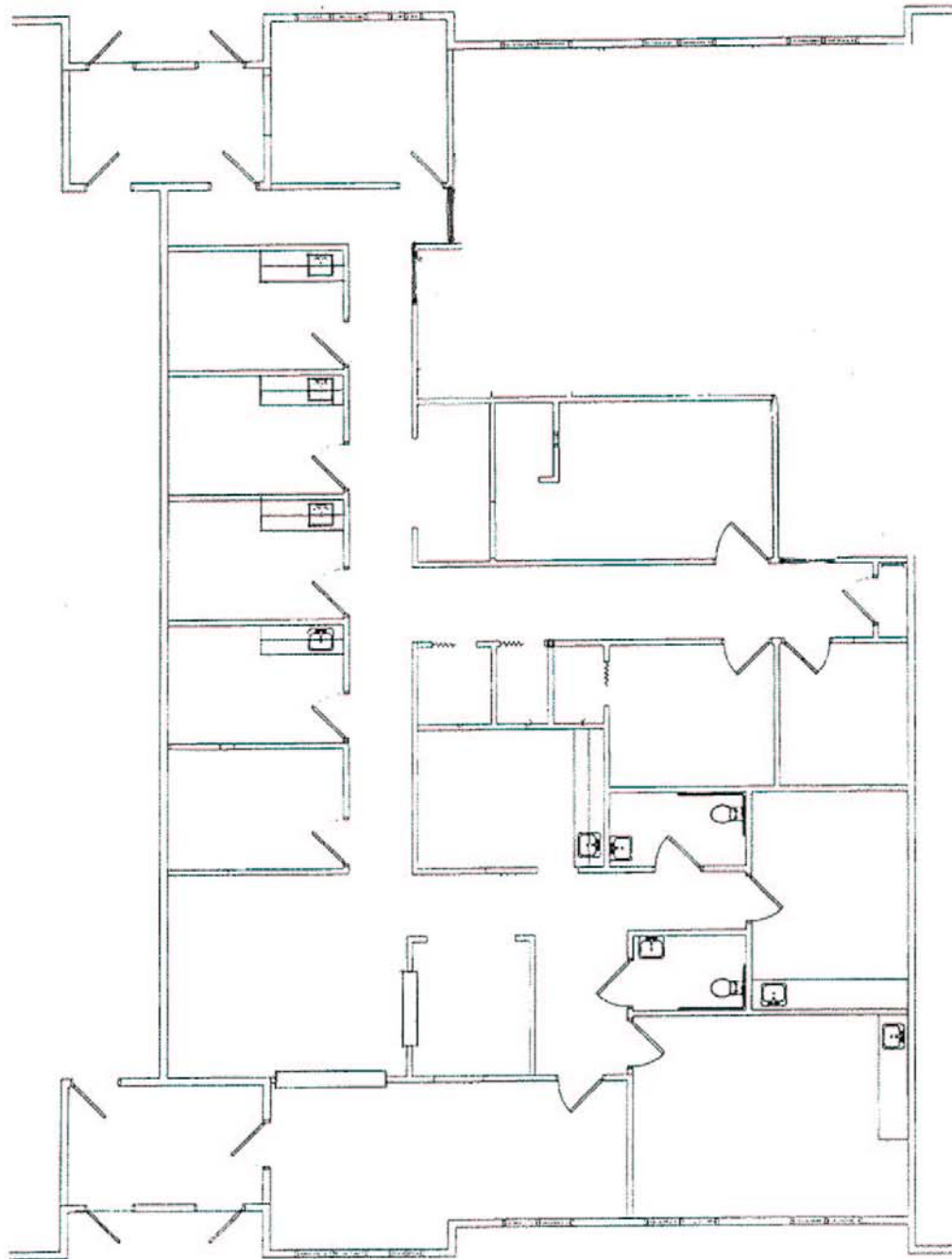
For Additional Information Contact:

Howard Needleman, President  
HNeedleman@NeedlemanManagement.com

Joan Harmer, Executive Vice President  
JHarmer@NeedlemanManagement.com

David Cohen, Executive Vice President  
DCohen@NeedlemanManagement.com

[www.NeedlemanManagement.com](http://www.NeedlemanManagement.com)



<b>NEEDLEMAN MANAGEMENT COMPANY</b> Leasing and Property Management 856-482-5959		<b>DELTRAN PROFESSIONAL CENTER</b> Building 2, Suite 310 Delran, New Jersey	
<b>RAYMOND KLUMB, AIA ARCHITECT</b> 571 N. Frontage Road, PO Box 126 Pearce, AZ 85625			
Room sizes and dimensions are approximate and subject to verification of existing field conditions. Drawings sent by PDF or facsimile are subject to distortion of scale.		Scale/Paper Size 3/32"=1'-0" 8-1/2x11	Date 12/09/2008
		Dwg <b>EXISTING CONDITIONS</b>	