



## CROSS COUNTY PLAZA 2110 ROUTE 70 EAST CHERRY HILL, NJ

- Excellent location on major highway with high traffic count.
- Good diversity of tenants
- Availability: Store 19 ~ 850 SF



**NEEDLEMAN MANAGEMENT**  
1060 North Kings Highway  
Suite 250  
Cherry Hill, NJ 08034

Phone: 856-482-5959  
Fax: 856-482-6215

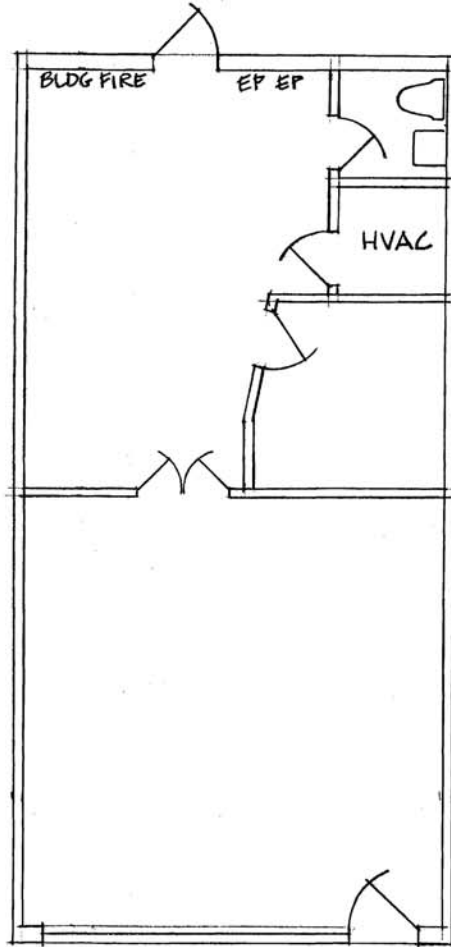
For Additional Information, please contact:

**Howard Needleman, President**  
Howard@NeedlemanRE.com

**Joan M. Harmer, Executive Vice President**  
Joan@NeedlemanRE.com

**David Cohen, Executive Vice President** Da-  
vid@NeedlemanRE.com

[www.NeedlemanRE.com](http://www.NeedlemanRE.com)



<p><b>NEEDLEMAN MANAGEMENT COMPANY</b> Leasing and Property Management 856-482-5959</p>	<p><b>CROSS COUNTY PLAZA</b> Route 70, Store 19 Cherry Hill, New Jersey</p>		
<p><b>RAYMOND KLUMB, AIA ARCHITECT</b> 571 N. Frontage Road, PO Box 126 Pearce, AZ 85625</p>			
<p>Existing conditions plan developed from drawings provided by Client; space has not been field verified by the Architect. Room sizes and dimensions are approximate and subject to verification of existing field conditions. Drawings sent by PDF or facsimile are subject to distortion of scale.</p>	<p>Scale/Paper Size 1/8"=1'-0" 8-1/2x11</p>	<p>Date 06/18/2009</p>	<p>Dwg <b>EXISTING CONDITIONS</b></p>