



Commercial Property



LAUREL OAK CORPORATE CENTER 1010 HADDONFIELD-BERLIN ROAD VOORHEES, NEW JERSEY

- Laurel Oak Corporate Center is comprised of two single story multi-tenanted office buildings separated by an attractive park-like courtyard. Benches provide a convenient location for employee breaks, weather permitting. The lobbies and common restrooms are recently renovated.
- Area amenities include the Voorhees Town Center shopping mall and the PATCO Hi-Speed Line.
- Available:
 - 1010 Building Suite 301 @ 3,750 SF
 - Suite 405 @ 1,175 SF



Needleman Management Co., Inc.
1060 N. Kings Highway
Suite 250
Cherry Hill, NJ 08034
Phone: 856-482-5959
Fax: 856-482-6215

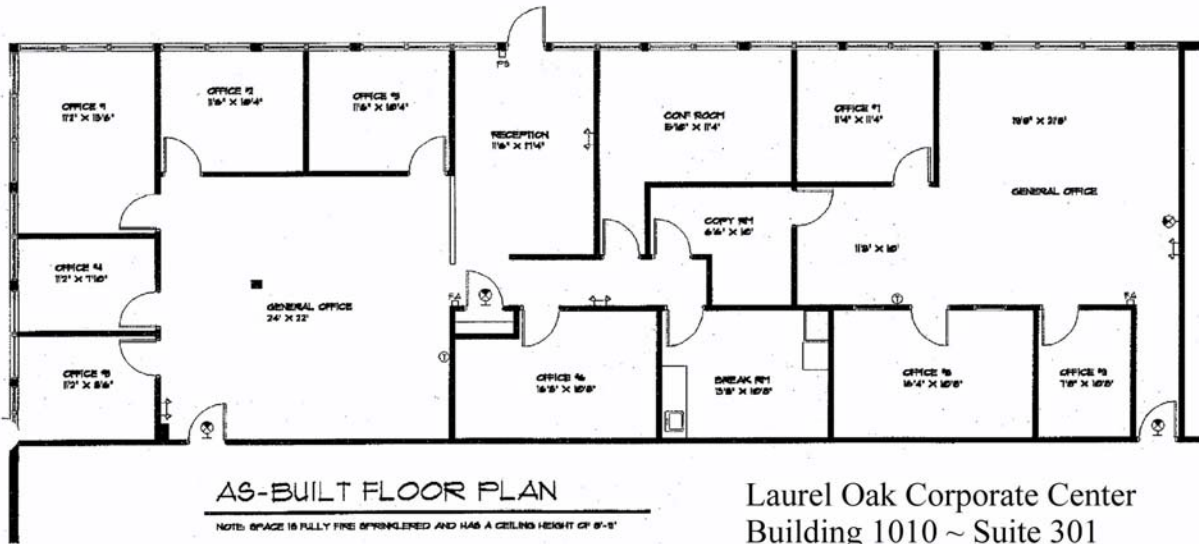
For Additional Information Contact:

Howard Needleman, President
Howard@NeedlemanRE.com

Joan Harmer, Executive Vice President
Joan@NeedlemanRE.com

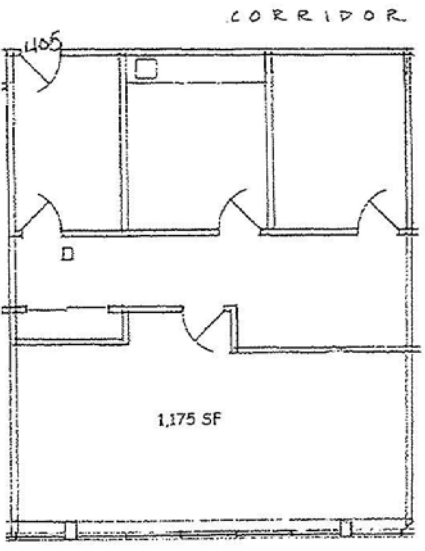
David Cohen, Executive Vice President
David@NeedlemanRE.com

www.NeedlemanRE.com



Laurel Oak Corporate Center
 Building 1010 ~ Suite 301
 Voorhees, NJ

	1060 North Kings Highway • Suite 250 Cherry Hill • New Jersey • 08034 Phone: 856-482-5959 Fax: 856-482-6215 www.NeedlemanManagement.com
	Subject to errors, omissions and changes. This is not an actual architectural drawing. All lines and dimensions are approximate.



NEEDLEMAN MANAGEMENT COMPANY Leasing and Property Management 856-482-5959	LAUREL OAK CORPORATE CENTER 1010 Haddonfield-Berlin Road, Suite 405 Voorhees Township, New Jersey		
RAYMOND KLUMB, AIA ARCHITECT 571 N. Frontage Road, PO Box 126 Pearce, AZ 85625	Scale/Paper Size 1/8"=1'-0" 8 1/2"x14	Date 06/29/2010	Dwg EXISTING CONDITIONS
Existing conditions plan developed from drawings provided by Client; space has not been field verified by the Architect. Room sizes and dimensions are approximate and subject to verification of existing field conditions. Drawings sent by PDF or facsimile are subject to discretion of scale.			