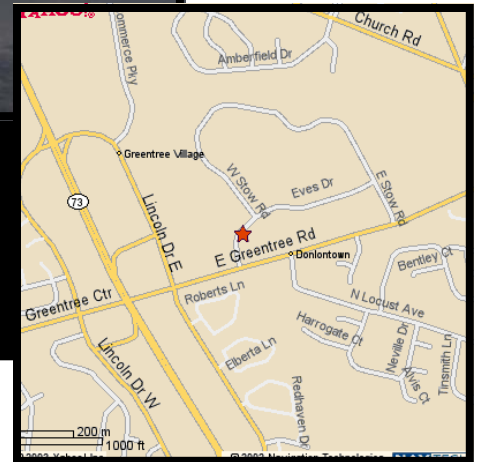




3 EVES DRIVE MARLTON, NJ



- Condominium-style office building with direct access from parking and individually controlled heat and air.
- Convenient location.
- Current Availabilities:
Building Three:
Suite 303 ~ 1,125 SF



1060 N. Kings Highway
Suite 250
Cherry Hill, NJ 08034
Phone: 856-482-5959
Fax: 856-482-6215

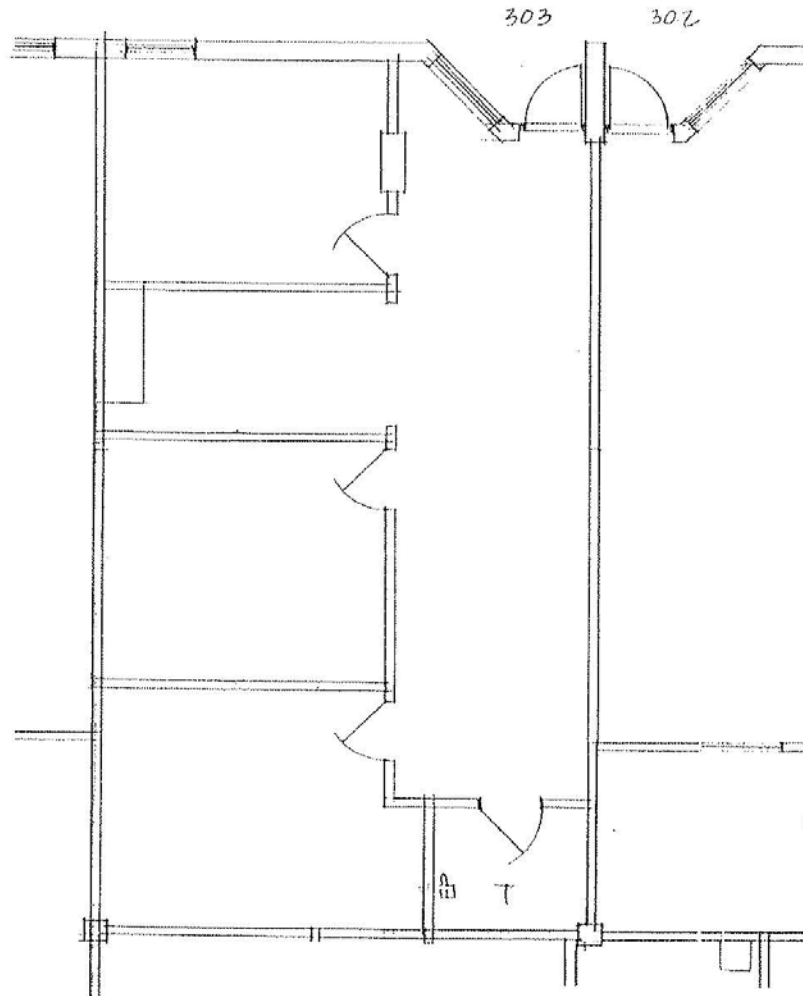
For Additional Information Contact:

Howard Needleman, President
Howard@NeedlemanRE.com

Joan Harmer, Executive Vice President
Joan@NeedlemanRE.com

David Cohen, Executive Vice President
David@NeedlemanRE.com

www.NeedlemanRE.com



<p>NEEDLEMAN MANAGEMENT COMPANY Leasing and Property Management 856-482-5959</p>	<p>3 EVES DRIVE Suite 303 Marlton, New Jersey</p>		
<p>RAYMOND KLUMB ARCHITECT 571 N. Frontage Road, PO Box 126 Pearce, AZ 85625</p>			
<p>Existing conditions plan developed partially from drawings that were provided by the Client and have not been field verified by the Architect. Room sizes and dimensions are approximate and subject to verification of field conditions. Drawings sent by PDF or facsimile are subject to distortion of scale.</p>	<p>Scale/Paper Size 1/8"=1'-0" 8-1/2x11</p>	<p>Date 09/08/2011</p>	<p>Dwg EXISTING CONDITIONS</p>