



Commercial Property



NEEDLEMAN
MANAGEMENT CO., INC.

1060 North Kings Highway
Suite 250
Cherry Hill, NJ 08034

For Additional Information Contact:

Howard Needleman, President
Howard@NeedlemanRE.com

Joan M. Harmer, Exec. VP
Joan@NeedlemanRE.com

David Cohen, Exec. VP
David@NeedlemanRE.com

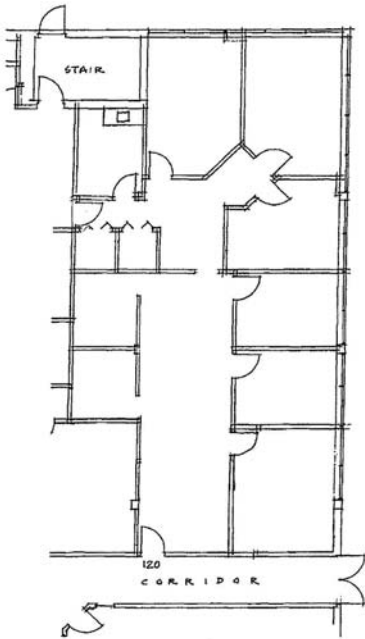
Phone: 856-482-5959
Fax: 856-482-6215
www.NeedlemanRE.com

CHERRY HILL OFFICE CENTER 1060 NORTH KINGS HIGHWAY CHERRY HILL, NJ

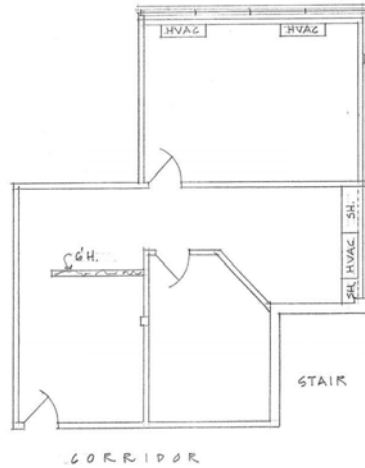
- Excellent location on the Kings Highway corridor adjacent to the Cherry Hill Public Library, banking and restaurants.
- Three story office building; ample parking.
- Current Availability:

First Floor:	Suite 120 ~ 2,400 SF
Third Floor:	Suite 301 ~ 1,250 SF Suite 309 ~ 875 SF Suite 312 ~ 975 SF

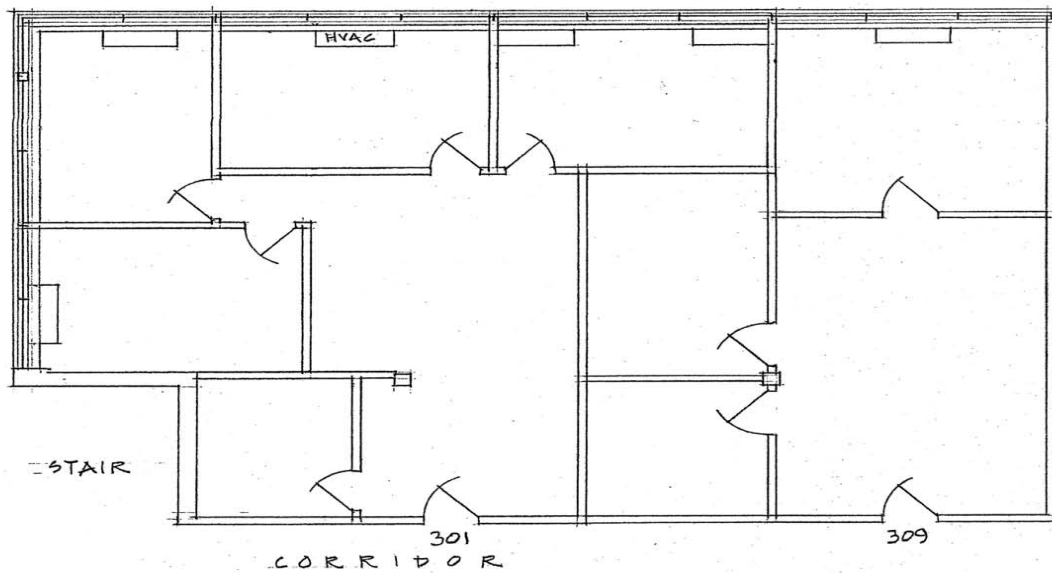
← 2,125 SF total



NEEDLEMAN MANAGEMENT COMPANY Leasing and Property Management 856-482-5959	CHERRY HILL OFFICE CENTER 1060 North Kings Highway, Suite 120 Cherry Hill, New Jersey		
RAYMOND KLUMB, AIA ARCHITECT 571 N. Frontage Road, PO Box 126 Pearce, AZ 85625	Scale 3/32"=1'-0"	Date 01/18/2007	Dwg EXISTING CONDITIONS
All room sizes and dimensions are approximate and subject to verification of existing field conditions. Drawings sent by PDF or facsimile are subject to distortion of scale.			



NEEDLEMAN MANAGEMENT COMPANY Leasing and Property Management 856-482-5959	CHERRY HILL OFFICE CENTER 1060 North Kings Highway, Suite 312 Cherry Hill, New Jersey		
RAYMOND KLUMB, AIA ARCHITECT 571 N. Frontage Road, PO Box 126 Pearce, AZ 85625	Scale/Paper Size 1/8"=1'-0" 8 1/2"x11	Date 10/24/2011	Dwg EXISTING CONDITIONS
Room sizes and dimensions are approximate and subject to verification of existing field conditions. Drawings sent by PDF or facsimile are subject to distortion of scale.			



NEEDLEMAN MANAGEMENT COMPANY Leasing and Property Management 856-482-5959	CHERRY HILL OFFICE CENTER 1060 North Kings Highway, Suites 301, 309 Cherry Hill, New Jersey		
RAYMOND KLUMB, AIA ARCHITECT 571 N. Frontage Road, PO Box 126 Pearce, AZ 85625	Scale/Paper Size 1/8"=1'-0" 8 1/2"x11	Date 02/07/2012	Dwg EXISTING CONDITIONS
Existing conditions plan of Suite 309 developed from drawings provided by Client; space has not been field verified by the Architect. Room sizes and dimensions are approximate and subject to verification of existing field conditions. Drawings sent by PDF or facsimile are subject to distortion of scale.			