

**6 NORTH BROAD STREET
WOODBURY, NJ**

- Professional office availabilities.
- Excellent location in the center of town and in close proximity to the Court House extension and new retail complex with ramped parking facility.
- Availabilities: Suite 202 ~ 1,025 SF ‡
Suite 204 ~ 1,850 SF ‡

‡ denotes contiguous; may be combined



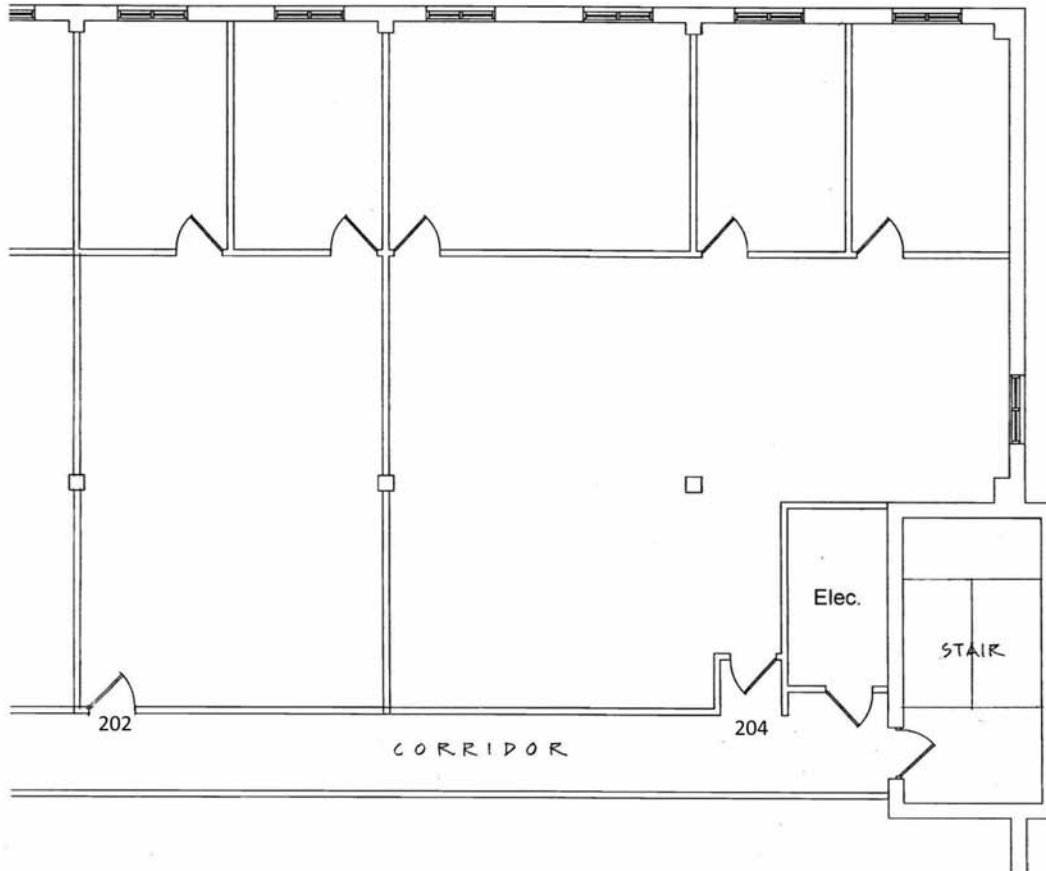
1060 N. Kings Highway
Suite 250
Cherry Hill, NJ 08034
Phone: 856-482-5959
Fax: 856-482-6215

For Additional Information Contact:

Howard Needleman, President
Howard@NeedlemanRE.com

Joan Harmer, Executive Vice President
Joan@NeedlemanRE.com

David Cohen, Executive Vice President
David@NeedlemanRE.com



<p>NEEDLEMAN MANAGEMENT COMPANY Leasing and Property Management 856-482-5959</p>	<p>6 NORTH BROAD STREET Suites 202 & 204 Woodbury, New Jersey</p>		
<p>RAYMOND KLUMB ARCHITECT 571 N. Frontage Road, PO Box 126 Pearce, AZ 85625</p>			
<p>Plan developed from information provided by the Owner and previous survey by the Architect; existing conditions have not been re-verified. Room sizes and dimensions are approximate and subject to verification of field conditions. Drawings sent by PDF or facsimile are subject to distortion of scale.</p>	<p>Scale/Paper Size 3/32"=1'-0" 8-1/2x11</p>	<p>Date 04/02/2010</p>	<p>Dwg EXISTING CONDITIONS</p>