



# Commercial Property



## TALL OAKS CORPORATE CENTER

1000 LENOLA ROAD  
MAPLE SHADE, NEW JERSEY

- Conveniently located between Route 38 and Kings Highway with easy accessibility to the area's other major traffic routes makes Tall Oaks an ideal office location.
- Business amenities such as banking facilities, hotels and restaurants are nearby together with two major retail centers.
- Two-story building features include a long window line and lobby with atrium.
- Available: Suite 100 @ 850 SF  
Suite 201 @ 2,500 SF

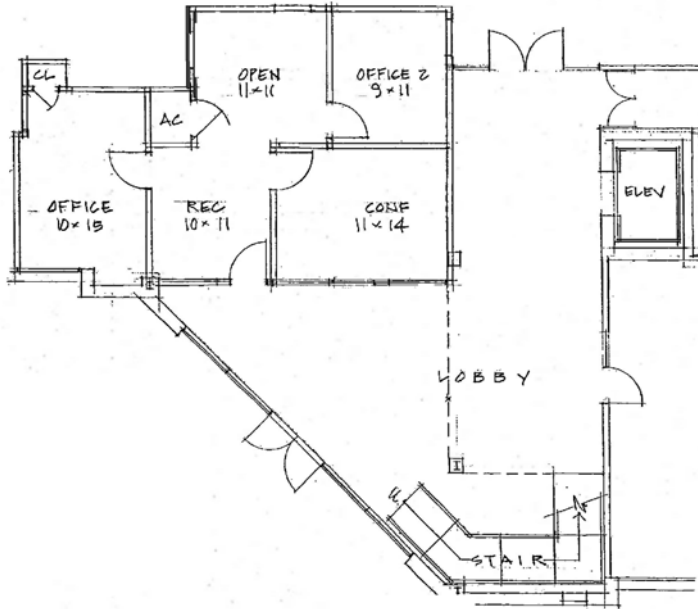


Needleman Management Co., Inc.  
1060 N. Kings Highway, Suite 250  
Cherry Hill, NJ 08034  
Phone: 856-482-5959  
Fax: 856-482-6215

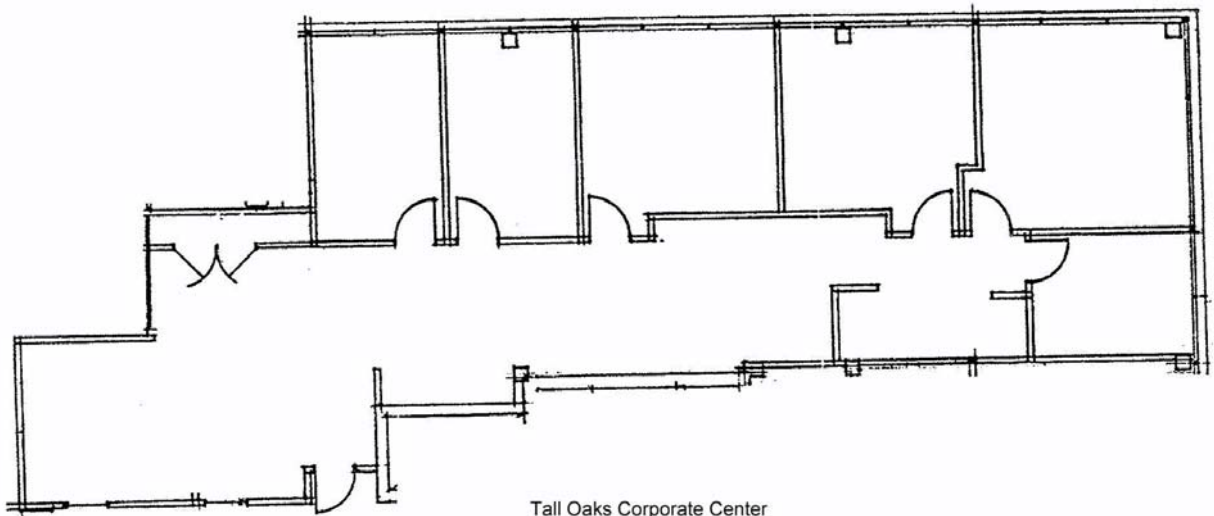
For Additional Information Contact:

**Howard Needleman, President**  
Howard@NeedlemanRE.com  
**Joan Harmer, Executive Vice President**  
Joan@NeedlemanRE.com  
**David Cohen, Executive Vice President**  
David@NeedlemanRE.com

[www.NeedlemanRE.com](http://www.NeedlemanRE.com)



<b>NEEDLEMAN MANAGEMENT COMPANY</b> Leasing and Property Management 856-482-5959		<b>TALL OAKS CORPORATE CENTER I</b> Suite 100 1000 Lenola Road Maple Shade, New Jersey	
<b>RAYMOND KLUMB, AIA ARCHITECT</b> 571 N. Frontage Road, PO Box 126 Pearce, AZ 85625		Scale/Paper Size 1/8"=1'-0" 8-1/2x11	Date 11/30/2007
<small>Existing conditions plan developed from drawings provided by Client; space has not been field verified by the Architect. Room sizes and dimensions are approximate and subject to verification of existing field conditions. Drawings sent by PDF or facsimile are subject to distortion of scale.</small>		Dwg <b>SK3</b> NOT FOR CONSTRUCTION	



Tall Oaks Corporate Center  
 Building One ~ Suite 201  
 1000 Lenola Road  
 Maple Shade, NJ

	1060 North Kings Highway • Suite 250 Cherry Hill • New Jersey • 08034 Phone: 856-482-5959 Fax: 856-482-6215 <a href="http://www.NeedlemanManagement.com">www.NeedlemanManagement.com</a>
	<small>Subject to errors, omissions and changes. This is not an actual architectural drawing. All lines and dimensions are approximate.</small>