

Bank Site Available

Intersection of Williamstown-New Freedom and Sicklerville Roads
Sicklerville, New Jersey



Free-standing 3000 SF modern bank offices with drive-through; site is part of The Crossroads, a redevelopment project for professional and medical offices located at the intersection of Williamstown-New Freedom and Sicklerville Roads, Sicklerville, New Jersey.

- ◆ RENTAL RATE: \$75,000.00/YEAR NET
- ◆ ABUNDANT PARKING
- ◆ CONVENIENTLY LOCATED MINUTES FROM ATLANTIC CITY EXPRESSWAY AND ROUTE 42
- ◆ DEMOGRAPHICS FOR 5 MILES: POPULATION 98,244; MEDIAN HH INCOME \$63,391; AGE 35.7



Needleman Management Co., Inc.

1060 N. Kings Highway
Suite 250

Cherry Hill, NJ 08034

Phone: 856-482-5959

Fax: 856-482-6215

For Additional Information Contact:

Howard Needleman, President

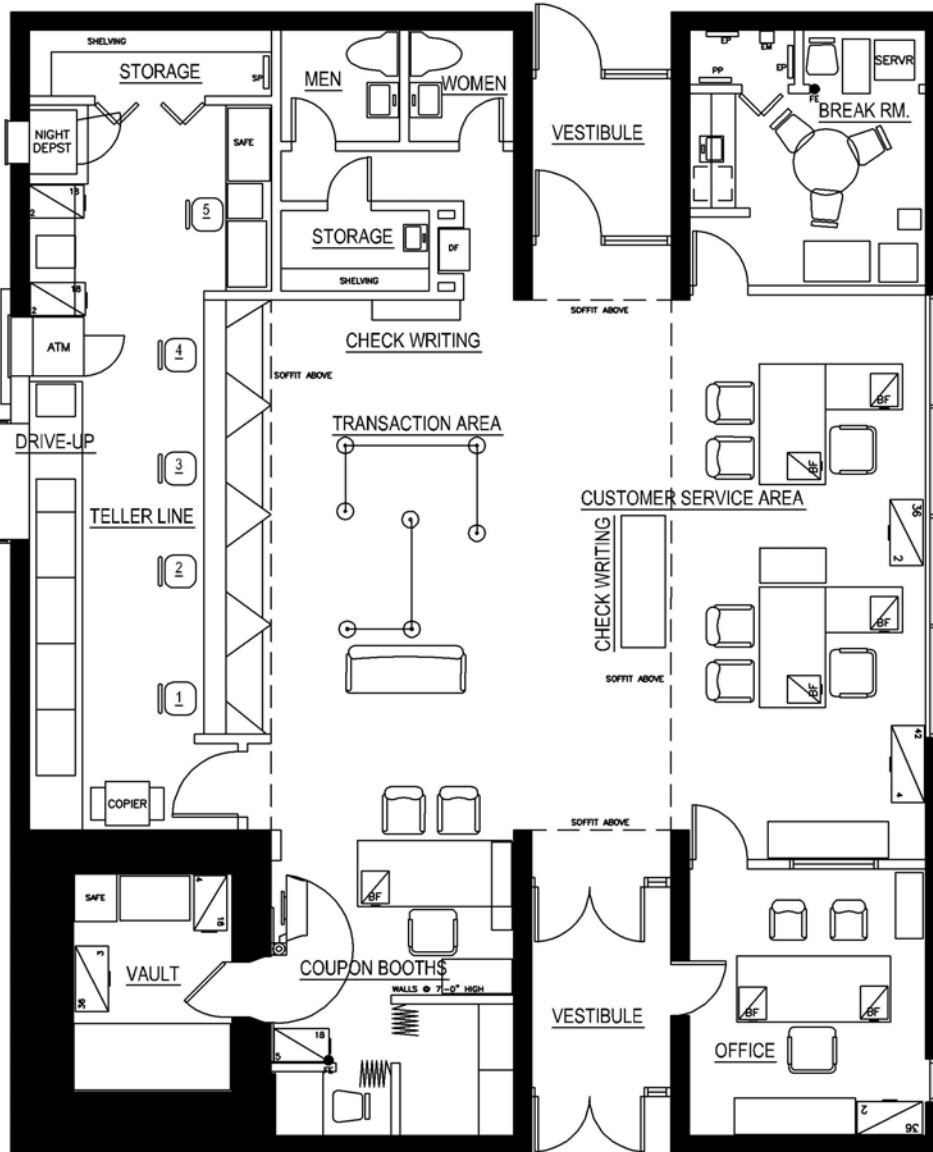
HNeedleman@NeedlemanManagement.com

Joan Harmer, Executive Vice President

JHarmer@NeedlemanManagement.com


David Cohen, Vice President

DCohen@NeedlemanManagement.com



BANK BRANCH

Williamstown-New Freedom & Sicklerville Roads
Sicklerville, New Jersey

 <p>Needleman MANAGEMENT</p>	<p>1060 North Kings Highway • Suite 250 Cherry Hill • New Jersey • 08034 Phone: 856•482•5959 Fax: 856•482•6215 www.NeedlemanManagement.com Subject to errors, omissions and changes. This is not an actual architectural drawing. All lines and dimensions are approximate.</p>
--	--